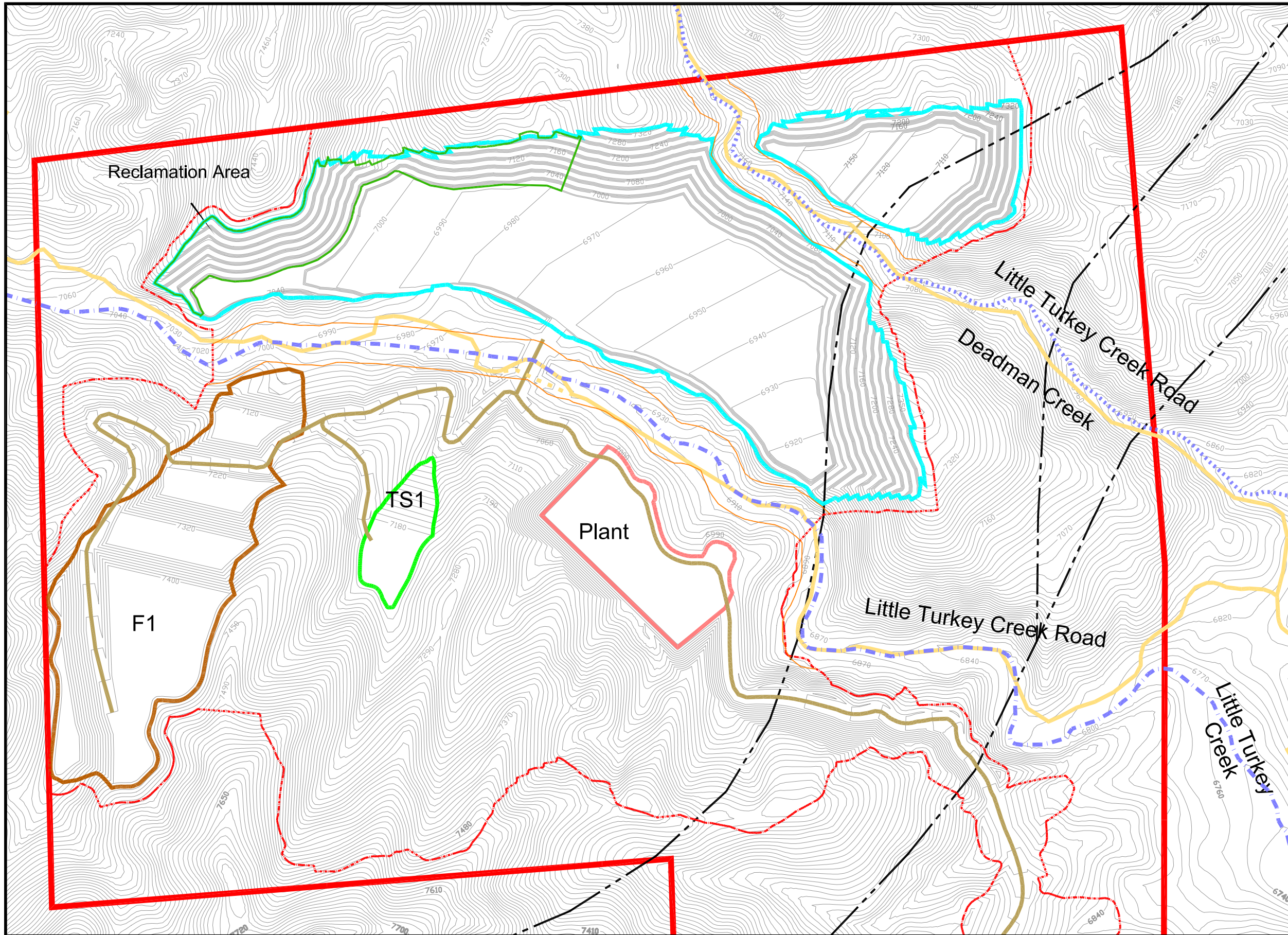


Oct 13, 2016 - 10:00am03:Transit Mix_591591-4_HRR_CDRMS\Disc3_CDRMS\Permit_30Jun2016\Final CAD\Figure C-7a_Phase IV.dwg



Legend

- Property Boundary
- - - Permit Boundary
- Topography (10ft Contour)
- Pit Crest
- Plant/Facilities Area
- - - Fault
- Existing Road
- - - Updated Existing Road
- Access Road
- Fines/Overburden Stockpile
- Topsoil Stockpile
- - - Perennial Drainage
- - - Ephemeral Drainage
- 100ft Buffer Zone from Creek
- Reclamation Area

NOTE: No ramp/haul road is shown between the North Pit and the North Pit Extension at this time as this design is not completed. Transit Mix will submit plans for Division review and approval before mining in this area.

FEET

NORWEST
CORPORATION

**TRANSIT MIX
CONCRETE CO.**

**Figure C-7a
Hitch Rack Ranch Quarry
Staging Drawing
Mining Phase IV**

DRAWN: JDS	DATE: Aug 19, 2016	PROJECT NO: 591-4	SCALE: As Shown
REVIEWER: PK	DATE REVIEWED: Aug 19, 2016		

Figure C-7a_Phase IV.dwg